

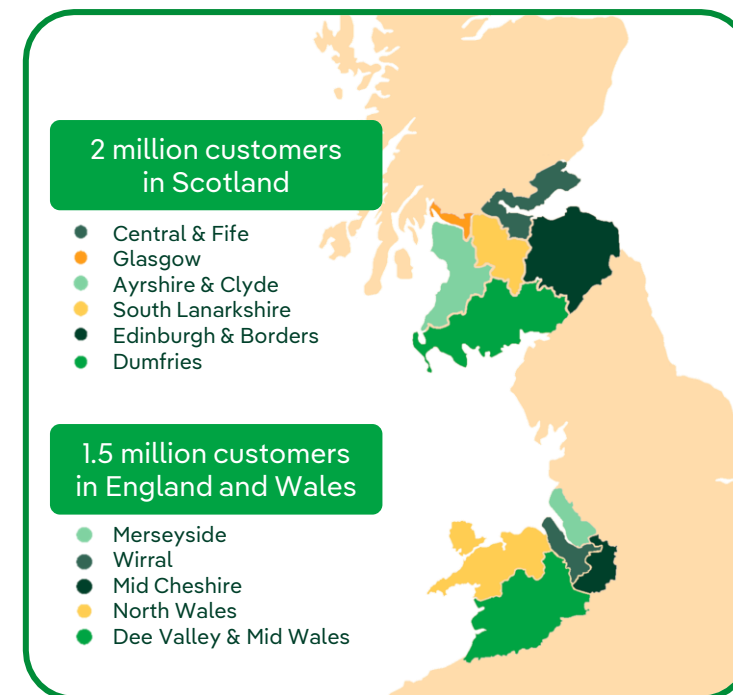
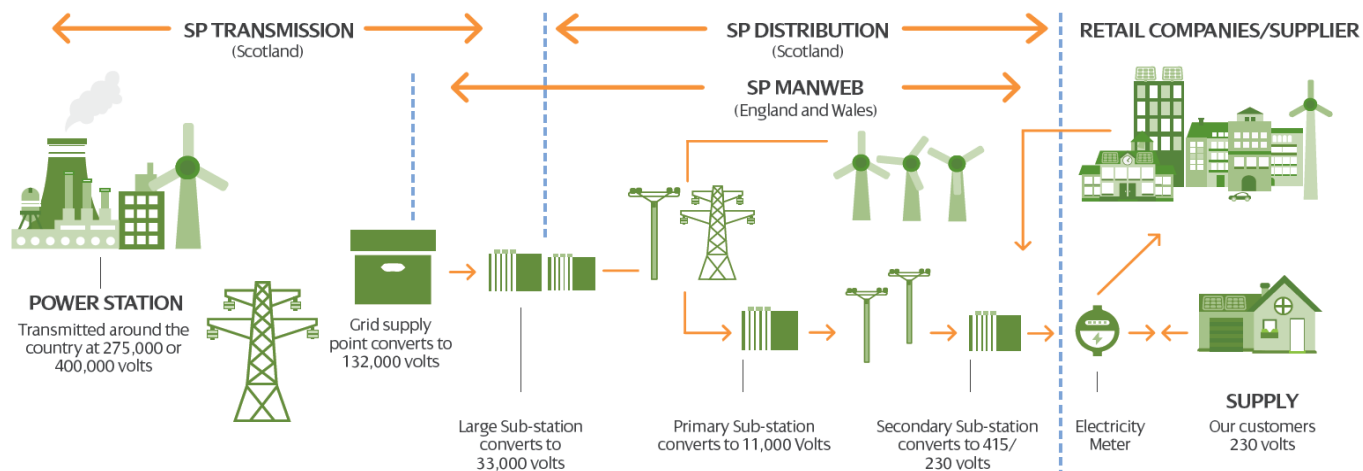


# SP Energy Networks - Dirleton LV Overlay

# SP Energy Networks: Who we are and where we operate

SP Energy Networks is part of the Scottish Power Group of companies. We provide power on behalf of supply companies through a network of cables and power lines that we own and maintain.

The transmission and distribution of electricity take place through a network of substations, overhead lines and underground cables



Customers are a broad mix of urban and rural

3,500 direct staff and 3,000 contractors

12,000 jobs indirectly supported in supply chain

£1bn+ annual expenditure

We are the only network operator to cover Scotland, England and Wales

# Network of the future: Enabling Net Zero

To meet the Net Zero challenge SP Energy Networks are ramping up operations across network investment, customer service and recruitment.

## Investment

**£3.3 billion** proposed between 2023 to 2028 within the Distribution licence alone.

**£0.25 billion** within the Edinburgh, East Lothian, and Borders region alone!



## Network footprint

>**42,000 kilometres** of overhead

>**68,000 kilometres** of underground cables

>**33,000** substations on our Distribution network



# Dirleton LV Overlay – Project Overview

Dirleton has been identified as a town requiring network investment to allow it to participate in the journey towards Net-zero.

## Scope of Works

2.7km Low Voltage cable overlay.

£0.5m investment in the local electricity network which will increase network capacity.

Project dates – April to September 2024

## What to Expect

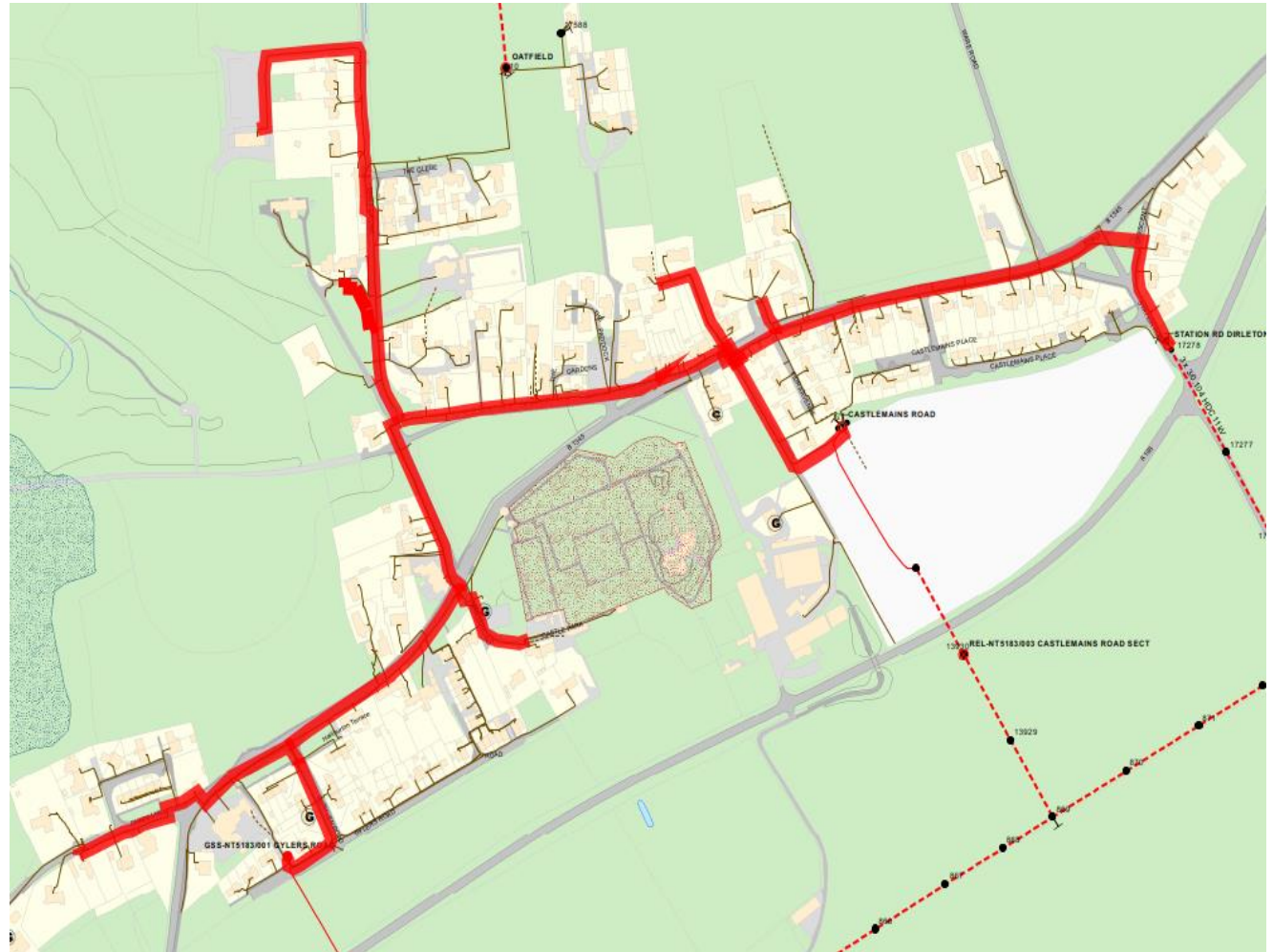
### Interruptions to your supply

During these works some properties will have supplies interrupted for a period of up to an hour. The site team will discuss this with all those affected.

### Traffic in your area

Traffic management will be in place as we work along the route.

On street parking and access to driveways will be restricted during the works.



# Additional Support & Contacts

Additional support is available during these works

## Project Contact

Project Manager - Andrew Mitchell  
[amitchell2@spenergynetworks.co.uk](mailto:amitchell2@spenergynetworks.co.uk)  
07717546956

Assistant Project Manager – Chris Ryles  
[cryles@spenergynetworks.co.uk](mailto:cryles@spenergynetworks.co.uk)  
077442934503

## [Dirleton Village Website further information](#)

[SP Energy Networks - Dirleton Works - Dirleton Village Website](#)

### Need a little extra help?

Are you dependent on special medical equipment, chronically sick, disabled or have some other special needs you would like us to consider? Or do you know someone who is?

You can register via our website [www.spenergynetworks.co.uk](http://www.spenergynetworks.co.uk) or by calling us on **0330 10 10 154**



Central and Southern Scotland  
Connections **0845 270 0785**  
General enquiries **0330 10 10 444**

**POWER CUT?  
CALL 105**



# Appendix 1 – Phase Plan

